

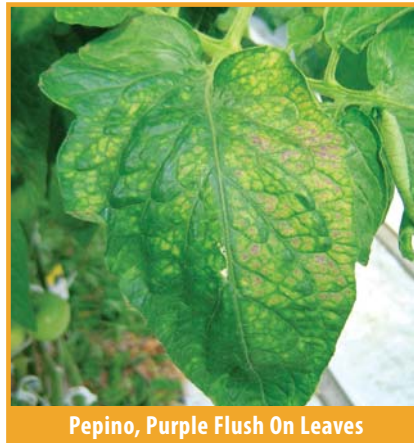
Growing Notes For Winter 2010

Tomato:

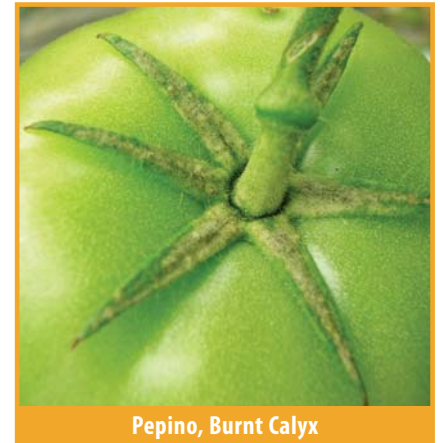
Pepino Mosaic virus (Pepino): Pepino can be aggressive during periods of low light and low temperatures in the winter. Under low light, plant development is slower and Pepino can outpace normal plant growth. Increasing fruit load aggravates this situation by increasing the growth demands of the plant. A plant with good growth speed has a better chance of outgrowing Pepino more quickly during low light. An average night temperature of 18°C or above during the period when light levels are below 8000 joules per week may be helpful. Be

careful of reducing night temperatures to save energy costs in this period. As light levels increase with day length, the plant speed increases beyond the Pepino development speed and it becomes safe to run cool nights.

Botrytis: It is possible the botrytis seen at the end of the crop is due to growing decisions taken during the early growth phase. Plants grown too vegetative with thick watery stems can be more susceptible to botrytis later. To avoid the fat stems and vegetative growth, the following techniques may help:



Pepino, Purple Flush On Leaves



Pepino, Burnt Calyx



Botrytis On Stem

- Activate the crop. Make sure there is good uptake and assimilate creation even on the cold dark days. This is done by increasing temperature for 2-3 hours every afternoon. Activity can be checked by turning over leaves which overlap tightly. An active plant will show transpiration water on the upper side of the lower leaf.
- In low light it is important to feed high enough EC. A plant grown with too low EC and excess water will be pale. Wait until later in the spring and summer to use light level reductions on feed EC.

- Use night temperature to avoid the plants from becoming too heavy. Daytime assimilate production should be used by the plant for growth in the night.
- Be careful to not over-feed nitrogen. Early in the crop before fruit load demands are high, it is possible to feed excess nitrogen. Always check with your consultant regarding optimum feed levels of all nutrients before making changes.



Another Way
We Are
Helping You Grow



Botrytis On Tomato Fruit